

COPYRIGHT © Hangzhou EZVIZ Software Co., Ltd.. ALL RIGHTS RESERVED.

Any and all information, including, among others, wordings, pictures, graphs are the properties of Hangzhou EZVIZ Software Co., Ltd. (hereinafter referred to as "EZVIZ"). This user manual (hereinafter referred to as "the Manual") cannot be reproduced, changed, translated, or distributed, partially or wholly, by any means, without the prior written permission of EZVIZ. Unless otherwise stipulated, EZVIZ does not make any warranties, guarantees or representations, express or implied, regarding to the Manual.



About this Manual

The Manual includes instructions for using and managing the product. Pictures, charts, images and all other information hereinafter are for description and explanation only. The information contained in the Manual is subject to change, without notice, due to firmware updates or other reasons. Please find the latest version in the **EZVIZ™** website (<http://www.ezvizlife.com>).

Revision Record

New release – January, 2019

Trademarks Acknowledgement

 **EZVIZ™**,  **™**, and other EZVIZ's trademarks and logos are the properties of EZVIZ in various jurisdictions. Other trademarks and logos mentioned below are the properties of their respective owners.

Legal Disclaimer

TO THE MAXIMUM EXTENT PERMITTED BY APPLICABLE LAW, THE PRODUCT DESCRIBED, WITH ITS HARDWARE, SOFTWARE AND FIRMWARE, IS PROVIDED "AS IS", WITH ALL FAULTS AND ERRORS, AND EZVIZ MAKES NO WARRANTIES, EXPRESS OR IMPLIED, INCLUDING WITHOUT LIMITATION, MERCHANTABILITY, SATISFACTORY QUALITY, FITNESS FOR A PARTICULAR PURPOSE, AND NON-INFRINGEMENT OF THIRD PARTY. IN NO EVENT WILL EZVIZ, ITS DIRECTORS, OFFICERS, EMPLOYEES, OR AGENTS BE LIABLE TO YOU FOR ANY SPECIAL, CONSEQUENTIAL, INCIDENTAL, OR INDIRECT DAMAGES, INCLUDING, AMONG OTHERS, DAMAGES FOR LOSS OF BUSINESS PROFITS, BUSINESS INTERRUPTION, OR LOSS OF DATA OR DOCUMENTATION, IN CONNECTION WITH THE USE OF THIS PRODUCT, EVEN IF EZVIZ HAS BEEN ADVISED OF THE POSSIBILITY OF SUCH DAMAGES.

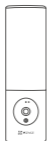
TO THE MAXIMUM EXTENT PERMITTED BY APPLICABLE LAW, IN NO EVENT SHALL EZVIZ'S TOTAL LIABILITY FOR ALL DAMAGES EXCEED THE ORIGINAL PURCHASE PRICE OF THE PRODUCT.

EZVIZ DOES NOT UNDERTAKE ANY LIABILITY FOR PERSONAL INJURY OR PROPERTY DAMAGE AS THE RESULT OF PRODUCT INTERRUPTION OR SERVICE TERMINATION CAUSED BY: A) IMPROPER INSTALLATION OR USAGE OTHER THAN AS REQUESTED; B) THE PROTECTION OF NATIONAL OR PUBLIC INTERESTS; C) FORCE MAJEURE; D) YOURSELF OR THE THIRD PARTY, INCLUDING WITHOUT LIMITATION, USING ANY THIRD PARTY'S PRODUCTS, SOFTWARE, APPLICATIONS, AND AMONG OTHERS.

REGARDING TO THE PRODUCT WITH INTERNET ACCESS, THE USE OF PRODUCT SHALL BE WHOLLY AT YOUR OWN RISKS. EZVIZ SHALL NOT TAKE ANY RESPONSIBILITIES FOR ABNORMAL OPERATION, PRIVACY LEAKAGE OR OTHER DAMAGES RESULTING FROM CYBER ATTACK, HACKER ATTACK, VIRUS INSPECTION, OR OTHER INTERNET SECURITY RISKS; HOWEVER, EZVIZ WILL PROVIDE TIMELY TECHNICAL SUPPORT IF REQUIRED. SURVEILLANCE LAWS AND DATA PROTECTION LAWS VARY BY JURISDICTION. PLEASE CHECK ALL RELEVANT LAWS IN YOUR JURISDICTION BEFORE USING THIS PRODUCT IN ORDER TO ENSURE THAT YOUR USE CONFORMS TO THE APPLICABLE LAW. EZVIZ SHALL NOT BE LIABLE IN THE EVENT THAT THIS PRODUCT IS USED WITH ILLEGITIMATE PURPOSES.

IN THE EVENT OF ANY CONFLICTS BETWEEN THE ABOVE AND THE APPLICABLE LAW, THE LATTER PREVAILS.

包裝內容



攝影機 (x1)



鑽孔模板 (x1)

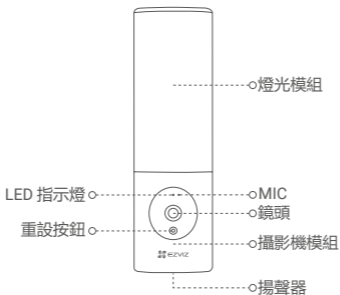


螺絲組 (x1)



快速使用指南 (x1)

基本說明



名稱

LED 指示燈

說明

- 恆亮紅燈：攝影機啟動中。
- 緩慢閃紅燈：Wi-Fi 連線失敗。
- 快速閃紅燈：攝影機例外狀況(例如記憶卡錯誤)。
- 恆亮藍燈：正在使用 EZVIZ 應用程式檢視即時影像。
- 緩慢閃藍燈：攝影機運作正常。
- 快速閃藍燈：攝影機可進行 Wi-Fi 連線。

鏡頭

鏡頭可向下調整 15 度。

攝影機模組

攝影機模組可左右旋轉 10 度。

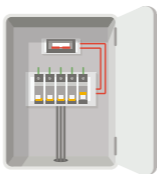
重設按鈕

按住 4 秒可重新啟動及重設所有參數至預設值。

安裝

- 建議的安裝高度：高於地面 6-7ft (1.8-2.2m)。
- 攝影機內建用於儲存影片的記憶卡。無需安裝額外的 SD 卡。

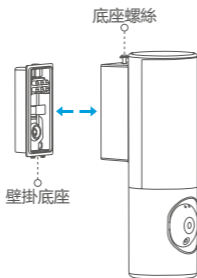
1. 關閉斷路器電源。



- 如果不知道斷路器的位置或關閉方式，請洽詢有執照的電工。
- 在安裝過程中，請隨時保持斷路器關閉。

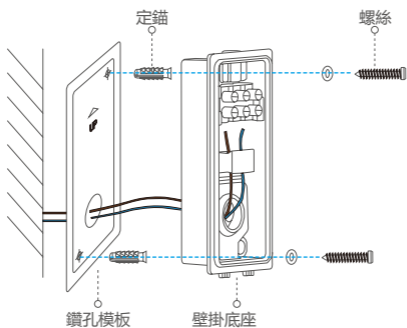
2. 將壁掛底座與攝影機分離。

使用螺絲起子(包裝中未隨附)鬆開底座螺絲，然後將安裝底座從攝影機上拉開。



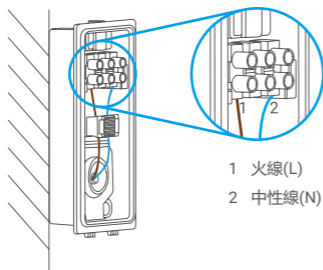
3. 裝上裝壁掛底座。

- 將鑽孔樣板放在選擇用來安裝底座的表面。
- (僅限水泥牆) 依照樣板鑽出螺絲孔，然後插入膨脹螺絲。
- 將電線從牆面經鑽孔樣板和安裝底座的橡膠穿出。
- 使用螺絲固定安裝底座。



4. 連接電線。

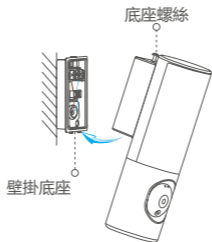
- 依序連接中性線(N)、火線(L)。
- 用螺絲起子固定電線。



- 1 火線(L)
- 2 中性線(N)

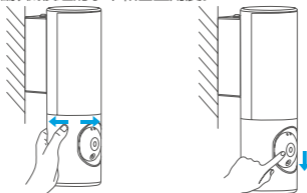
5. 將攝影機插至安裝底座。

- 將安裝底座底部扣入攝影機。
- 同時按壓安裝底座和攝影機。
- 鎖緊攝影機頂部的底座螺絲。

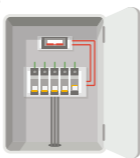


6. 調整攝影機模組的角度。

需要時可調整攝影機模組的水平和垂直角度。

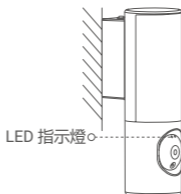


7. 讓斷路器恢復通電。



8. 確認攝影機已通電。

恢復電力後，當燈光模組亮起及正面的 LED 指示燈快速閃藍燈時，即可開始設定攝影機。



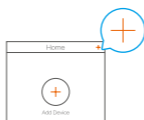
設定

1. 取得 EZVIZ 應用程式

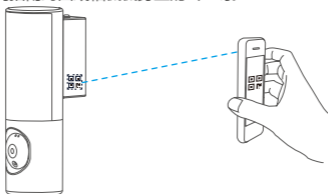
- 將您的手機連線至 Wi-Fi。
- 請在 App Store 和 Google Play Store™ 搜尋「EZVIZ」來下載和安裝 EZVIZ 應用程式。
- 啟動應用程式並且註冊 EZVIZ 使用者帳戶。

2. 將攝影機新增至 EZVIZ

- 使用 EZVIZ 應用程式登入帳號。
在主畫面中，點選右上角的「+」以進入掃描 QR 代碼介面。



- 掃描快速入門指南封面或相機機身上的 QR 碼。



- 依照 EZVIZ 應用程式精靈完成 Wi-Fi 設定。

i 如要變更攝影機的 Wi-Fi，請按住重設鈕 4 秒，然後重複以上步驟。

i 低功率電波輻射性電機管理辦法

第十二條

經型式認證合格之低功率射頻電機，非經許可，公司、商號或使用者均不得擅自變更頻率、加大功率或變更原設計之特性及功能。

第十四條

低功率射頻電機之使用不得影響飛航安全及干擾合法通信；經發現有干擾現象時，應立即停用，並改善至無干擾時方得繼續使用。前項合法通信，指依電信法規定作業之無線電通信。低功率射頻電機須忍受合法通信或工業、科學及醫療用電波輻射性電機設備之干擾。

i 如需詳細資訊，請造訪 www.ezvizlife.com。